

**28 Penn Road, Datchet, Slough, Berkshire, SL3 9HT**  
**Offers in excess of £499,950**



## 28 Penn Road, Datchet, Slough, Berkshire, SL3 9HT

This charming house in Datchet on Penn Road offers two/three spacious double bedrooms, including a master with ensuite, plus a family bathroom. It also features a versatile loft room suitable for a study, playroom, or guest space. Outside, there is a private rear garden ideal for relaxing or entertaining. Conveniently located near local amenities and transport links, the property is well suited to families or professionals looking for a peaceful yet accessible home.



### **Property Summary**

Located in the charming village of Datchet, on the desirable Penn Road. The property boasts two/three spacious double bedrooms, providing ample space for relaxation and rest. In addition to the family bathroom, the master bedroom features an ensuite bathroom, ensuring privacy and ease for the occupants.

One of the standout features of this home is the additional loft room, which presents a versatile space that can be tailored to your needs, whether as a study, playroom, or guest room. The property is further enhanced by a private rear garden, an ideal spot for outdoor entertaining, gardening, or simply enjoying the fresh air.

With its excellent location, this house is well-positioned to take advantage of the local amenities and transport links that Datchet has to offer. This property is perfect for families or professionals seeking a peaceful yet accessible living environment. Don't miss the opportunity to make this lovely house your new home.

### **General information**

Council tax band 'D'

### **Legal Note**

\*\*\*Although these particulars are thought to be materially correct their accuracy cannot be guaranteed and they do not form part of any contract\*\*\*





# Penn Road SL3

Approximate Gross Internal Floor Area = 111.3 sq m / 1198 sq ft

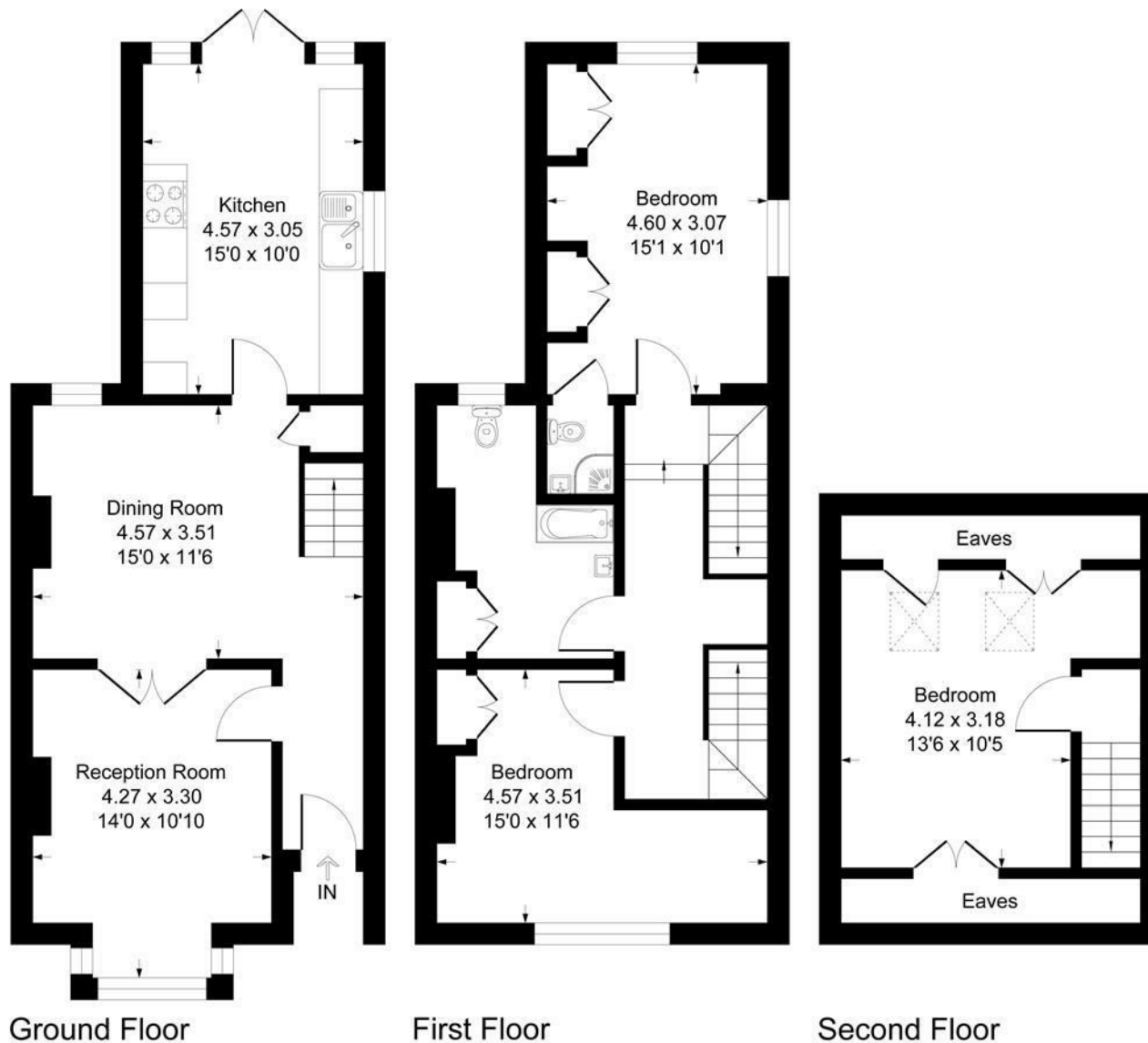


Illustration for identification purposes only, measurements are approximate, not to scale.  
Produced By Esjay Property Marketing